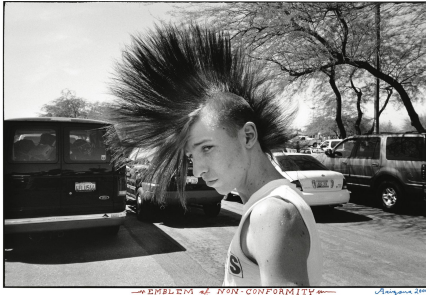


# CASEMORE

---

# KIRKEBY



**Deanna Templeton**

**Ed Templeton**

*Convergent Parallel*

July 20, 2018 - September 1, 2018

**Opening reception: July 20, 6 - 8pm**

In science the *convergent parallel* design occurs when researchers collect two sets of data independently and then later combine them for cross reference and analysis. This title is perfect for the way Deanna and I work separately and independently although often in close proximity, sometimes even shoot the same events and people, but come up with different results. This exhibition represents the convergence of our parallel practices where we mix our work together on the walls in a semi-chaotic style for further analysis.

We thought combining hundreds of examples of our work, culled from our archives and our various projects over the years both seen and unseen, framed and unframed, fine and work prints would create this immersive and overwhelming environment that will attempt to match that electricity.

-Ed Templeton

**Deanna Templeton** (b. 1969) is an American documentary photographer based in Southern California. She has 5 books of her photography published, "Your Logo Here" (PAM Books 2007), "Scratch My Name on your Arm" (Schunk 2010), "The Swimming Pool" (Um Yeah Arts 2016), "The Moon Has Lost Her Memory" (Super Labo 2017) and "Contemporary Suburbium" (Nazraeli 2017). She has shown her photographs worldwide including solo shows at the Little Big Man Gallery in Los Angeles, Fifty One Fine Art Photography in Antwerp, Belgium, The Museum Het Domein, Netherlands, NRW Forum, Dusseldorf, and The Schunk Museum, Netherlands, and group shows at The Australian Center for Photography, Sydney, The Preus Museum, Norway, The Contemporary Art Center of Virginia and Daelim Museum, South Korea.

**Ed Templeton** (b. 1972) A respected cult figure in the subculture of skateboarding, his paintings, photographs, drawings, and mixed-media installations take their inspiration from the subculture he is a part of and the suburban environment he lives in. Templeton is also a two-time world-champion professional skateboarder, and the founder/creative force behind Toy Machine Skateboard Company. His work has been shown at MOCA, Los Angeles, Palais de Tokyo, Paris, S.M.A.K. Museum, Belgium, Bonnefanten Museum, Netherlands, Kunsthalle, Vienna, Pier 24 Photography Museum, San Francisco, and BALTIC Centre for Contemporary Art, UK. His work is included in the LACMA permanent collection. Over 15 books of his work have been published.

*For inquiries please contact [info@casemorekirkeby.com](mailto:info@casemorekirkeby.com) or 415 851 9808*

---

**Location:** Casemore Kirkeby, 1275 Minnesota Street, #102, San Francisco, CA 94107

**Show Title:** Convergent Parallel

**Exhibition Dates:** July 20 - September 1, 2018

**Opening Reception:** Friday, July 20, 6-8pm

**Gallery Hours:** Tuesday - Saturday, 11am - 6pm